



City of Tallahassee
Your Own UtilitiesSM

WATER QUALITY REPORT

ANNUAL SUMMARY

2025



A MESSAGE FROM THE ENVIRONMENTAL SERVICES DIRECTOR



For more than 120 years, the City of Tallahassee has proudly supplied the community with a clean, dependable supply of high-quality water. As you'll see in our 2025 Water Quality Report, that standard of excellence continues today as the City's team of water quality professionals uses advanced technology and sound scientific practices to deliver the best product possible.

Our commitment and passion run deep. To ensure safe, reliable water reaches you, the City maintains a vast water production and distribution system and operates a state-of-the-art Water Quality Laboratory. This nationally accredited facility is certified to analyze nearly 400 chemical components for drinking water, non-potable water (e.g., wastewater and stormwater) and solid samples.

As a trusted partner, the City supports neighboring communities with laboratory services for compliance during both daily operations and in times of emergencies. In total, the laboratory processes 8,000 to 10,000 samples annually.

The Water Utility team is also passionate about eliminating possible cross contamination in the system and making sure that stormwater from rain and run-off is properly managed. This is accomplished through continual monitoring, measurement and testing.

In this year's report, you'll get to know dedicated team members working in Water Quality and Water Operations. With a shared love for our community, these industry professionals work diligently to protect and preserve Tallahassee's water. The data you will find in this report, along with staff spotlights, will help you understand all that we do to protect our water supply and ensure the water delivered to your home or business meets our high standard of excellence. Thank you for being a City of Tallahassee Utilities customer. We're proud to serve you.

Sincerely,

Alissa Meyers J.D.

Alissa Meyers, J.D.
Director, Environmental Services

The City of Tallahassee routinely monitors for more than 80 contaminants in your drinking water in accordance with federal and state laws, rules, and regulations. Only those detected are shown in this report. Except where indicated otherwise, this report is based on the results of our monitoring for the period of January 1 to December 31, 2025. Data obtained before January 1, 2025, and presented in this report are from the most recent testing done in accordance with the laws, rules, and regulations.

STAFF SPOTLIGHT



Paul Bagunu

Supervisor of Aquifer Protection and Industrial Pretreatment Program

With a Bachelor of Science in Chemical Engineering, Bagunu enjoys using collaborative and technical work to make a real environmental impact. With experience as an Environmental Engineer, he began his career in with the City of Tallahassee in 2024 and currently supervises pretreatment and aquifer protection efforts. Every day, Bagunu and his team work to protect the aquifer and our community's water quality, engaging with industrial facilities, conducting inspections and ensuring regulatory compliance is met.

Carion Goulbourne

Quality Assurance/Quality Control Officer

Since joining the City of Tallahassee in 2018 as a Laboratory Analyst, Smith has excelled through her passion for the field. In 2025, she became the Water Quality Laboratory's Quality Assurance/Quality Control Officer. Smith holds a Doctor of Public Health, Master of Business Administration and Bachelor of Science, along with numerous certifications. Her work helps protect public health and the environment through technical reviews of analytical data, quality control evaluation, method assessment and support of the laboratory's leading-edge quality management system.



Vivian Sorial

Water Quality Administrator and Technical Manager

Every day, Vivian Sorial works to ensure the City's Water Quality Laboratory operates efficiently while maintaining accreditation and providing outstanding service. With a Master of Science and a bachelor's degree in biology with a chemistry minor, Sorial enjoys collaborating with others in the science field and showcasing the lab's work during facility tours to highlight how City staff serves the community. She is also passionate about encouraging young people to pursue careers in science and provides ongoing guidance and training opportunities to support her team's continued growth and success.

Cedric Sykes

Environmental Technician

Cedric Sykes has served with the City of Tallahassee for 25 years. In his current role as an Environmental Technician, Sykes helps monitor water quality across 451 sample sites, works directly with customers to address water quality questions and ensures samples are gathered upstream and downstream any time a section of the water distribution system comes back online following a water system project. Sykes takes pride in sharing information about the City's extensive sampling process and award-winning drinking water with customers.



Devin Thornton

Water Quality Laboratory Supervisor

With inspiration from Bill Nye and encouragement from his parents, Thornton knew from a young age that he wanted to be a scientist. After earning his chemistry degree from the University of South Florida, he gained laboratory experience before joining the City in 2021. Thornton's daily work involves coordinating analytical goals across different lab sections and collaborating with customers to ensure they receive top-tier service and high-quality results. Thornton shares that he finds fulfillment working in local government and seeing the lab's work directly reflected in the wellbeing of our community.

Cody Sapp

Underground Utilities System Operator

Cody Sapp has served as an Underground Utilities System Operator with the City of Tallahassee for seven years. Sapp's day-to-day role includes operation and monitoring of water, sewer, natural gas and stormwater utilities through the SCADA (supervisory control and data acquisition) system. To ensure adequate water supply for all customers, the City's team monitors 27 wells, eight elevated storage tanks and eight pressure points. Sapp takes great pride in providing safe drinking water to our community.



WATER SOURCE, PLANS, AND TREATMENT

For more than 120 years, the City of Tallahassee has provided our community with a clean, dependable supply of drinking water.

In 2025, the City of Tallahassee operated 27 deep wells drilled directly into the Floridan aquifer. Because of the excellent quality of our water source, only limited treatment is required. Each of the well sources is treated with chlorine for disinfection purposes. In accordance with Senate Bill 700 (2025), the City of Tallahassee discontinued the addition of fluoride during this reporting year.

Six of the 27 wells use granular activated carbon to remove certain chemicals found in the aquifer in those locations. One well (offline for 2025) provides Greensand filtration to remove naturally occurring iron and manganese from the source water, and another well provides treatment to sequester iron and manganese in the distribution system.

In 2025, the Florida Department of Environmental Protection (FDEP) performed a Source Water Assessment on the City of Tallahassee's system. The assessment was conducted to provide information about any potential sources of contamination in the vicinity of our wells. There are 63 potential sources of contamination with low to high susceptibility levels. The assessment results are available on the FDEP Source Water Assessment and Protection Program website at <https://prodapps.dep.state.fl.us/swapp/>, or they can be obtained by contacting the City's Water Quality Laboratory at 850-891-1200.

WATER SERVICE LINE INVENTORY



The City of Tallahassee is proud to declare that its drinking water system is lead-free. This has been affirmed through a comprehensive analysis conducted between 2023 and 2025. "Lead-free" means there are no lead, galvanized requiring replacement, or lead status unknown service lines, no known lead connectors and no connectors of unknown material within the City's distribution system.

The City's lead-free declaration results from its timely completion of the initial lead service line inventory required by U.S. Environmental Protection Agency's (EPA) Lead and Copper Rule Revisions; completion of historical records reviews; field investigations; and predictive modeling (geostatistical modeling). Since 1991, the EPA Lead and Copper Rule has established guidelines to minimize lead and

copper in drinking water across the United States. The City's delivery of water to customers consistently meets all of these and other regulatory health-based standards. To learn more about water service line material verification, visit Talgov.com/WaterServiceLines.

ENSURE SAFETY OF HOME PLUMBING

Lead can cause serious health effects in people of all ages, especially pregnant people, infants (both formula-fed and breastfed), and young children. Lead in drinking water is primarily from materials and parts used in service lines and in home plumbing. The City of Tallahassee is responsible for providing high-quality drinking water and removing lead pipes but cannot control the variety of materials used in the plumbing in your home.

Because lead levels may vary over time, lead exposure is possible even when your tap sampling results do not detect lead at one point in time. You can help protect yourself and your family by identifying and removing lead materials within your home plumbing and taking steps to reduce your family's risk. Using a filter, certified by an American National Standards Institute accredited certifier to reduce lead, is effective in reducing lead exposures. Follow the instructions provided with the filter to ensure the filter is used properly. Use only cold water for drinking, cooking, and making baby formula. Boiling water does not remove lead from water. Before using tap water for drinking, cooking, or making baby formula, flush your pipes for several minutes. You can do this by running your tap, taking a shower, doing laundry or a load of dishes. If you have a lead service line or galvanized requiring replacement service line, you may need to flush your pipes for a longer period. If you are concerned about lead in your water and wish to have your water tested, contact the City of Tallahassee at 850-891-1200. Information on lead in drinking water, testing methods, and steps you can take to minimize exposure is available at epa.gov/safewater/lead.

UNDERSTANDING SOURCE WATER QUALITY

The sources of drinking water (both tap water and bottled water) include rivers, lakes, streams, ponds, reservoirs, springs, and aquifers. As water travels over the surface of the land or through the ground, it dissolves naturally occurring minerals and, in some cases, radioactive material and can pick up substances resulting from the presence of animals or from human activity.

Contaminants that may be present in source water include:

Microbial contaminants, such as viruses and bacteria, which may come from sewage treatment plants, septic systems, agricultural livestock operations, and wildlife.

Inorganic contaminants, such as salts and metals, which can be naturally occurring or result from urban stormwater runoff, industrial or domestic wastewater discharges, oil and gas production, mining, or farming.

Pesticides and herbicides, which may come from a variety of sources such as agriculture, urban stormwater runoff, and residential uses.

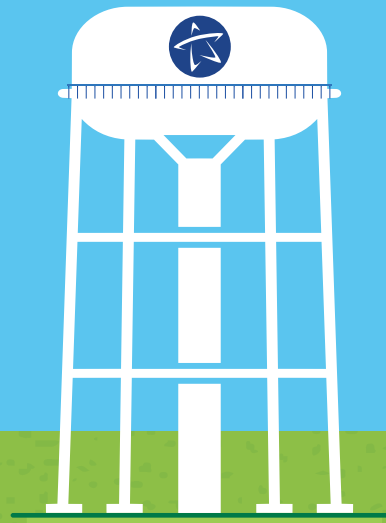
Organic chemical contaminants, including synthetic and volatile organic chemicals, which are by-products of industrial processes and petroleum production and can also come from gas stations, urban stormwater runoff, and septic systems.

Radioactive contaminants, which can be naturally occurring or be the result of oil and gas production and mining activities.

To ensure that tap water is safe to drink, the Environmental Protection Agency (EPA) prescribes regulations, which limit the amount of certain contaminants in water provided by public water systems. The Food and Drug Administration (FDA) regulations establish limits for contaminants in bottled water, which must provide the same protection for public health.

Drinking water, including bottled water, may reasonably be expected to contain at least small amounts of some contaminants. The presence of contaminants does not necessarily indicate that the water poses a health risk. More information about contaminants and potential health effects can be obtained by calling the Environmental Protection Agency's Safe Drinking Water Hotline at 1-800-426-4791.



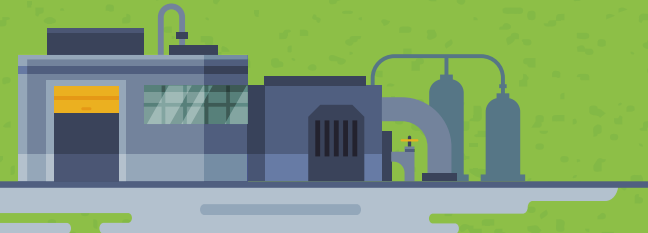
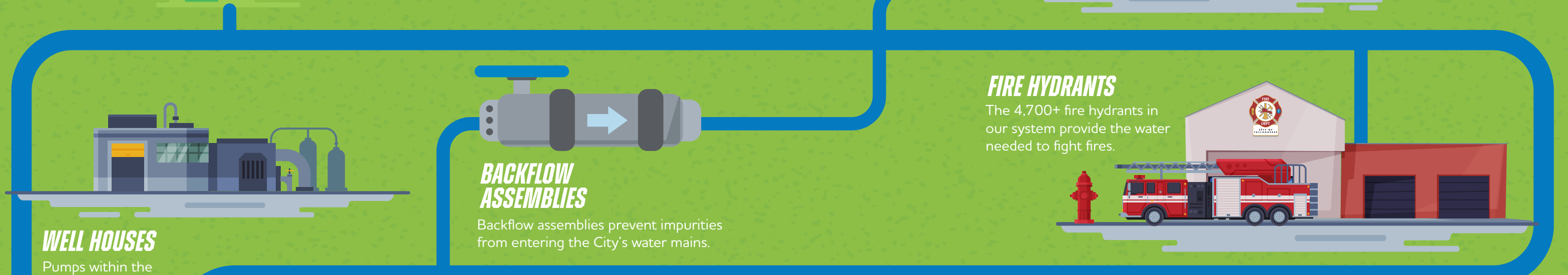


TANKS

Tanks are storage facilities used to help regulate pressure throughout the water distribution system and provide fire protection.

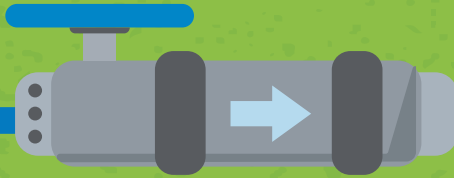
BUSINESSES

Businesses are regulated by City ordinances and are regularly inspected to ensure that cross-connections are protected.



WELL HOUSES

Pumps within the well houses are connected to the water distribution system, and draw groundwater up from the aquifer through deep wells.



BACKFLOW ASSEMBLIES

Backflow assemblies prevent impurities from entering the City's water mains.

FIRE HYDRANTS

The 4,700+ fire hydrants in our system provide the water needed to fight fires.

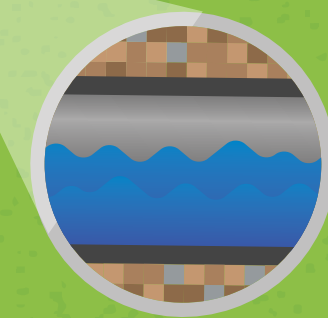


HOMES

A typical home uses seven gallons of water every time a toilet is flushed and up to 50 gallons of water for a five-minute shower.

SERVICE LINES

Service lines transport the water from the water mains in the street to your home.



WATER MAINS

Water mains are the arteries that carry water throughout the distribution system.



WATER METERS

Water meters measure the amount of water you use.

FLORIDAN AQUIFER

The Floridan Aquifer is the underground source of fresh water delivered to you for consumption.

FOREVER CHEMICALS

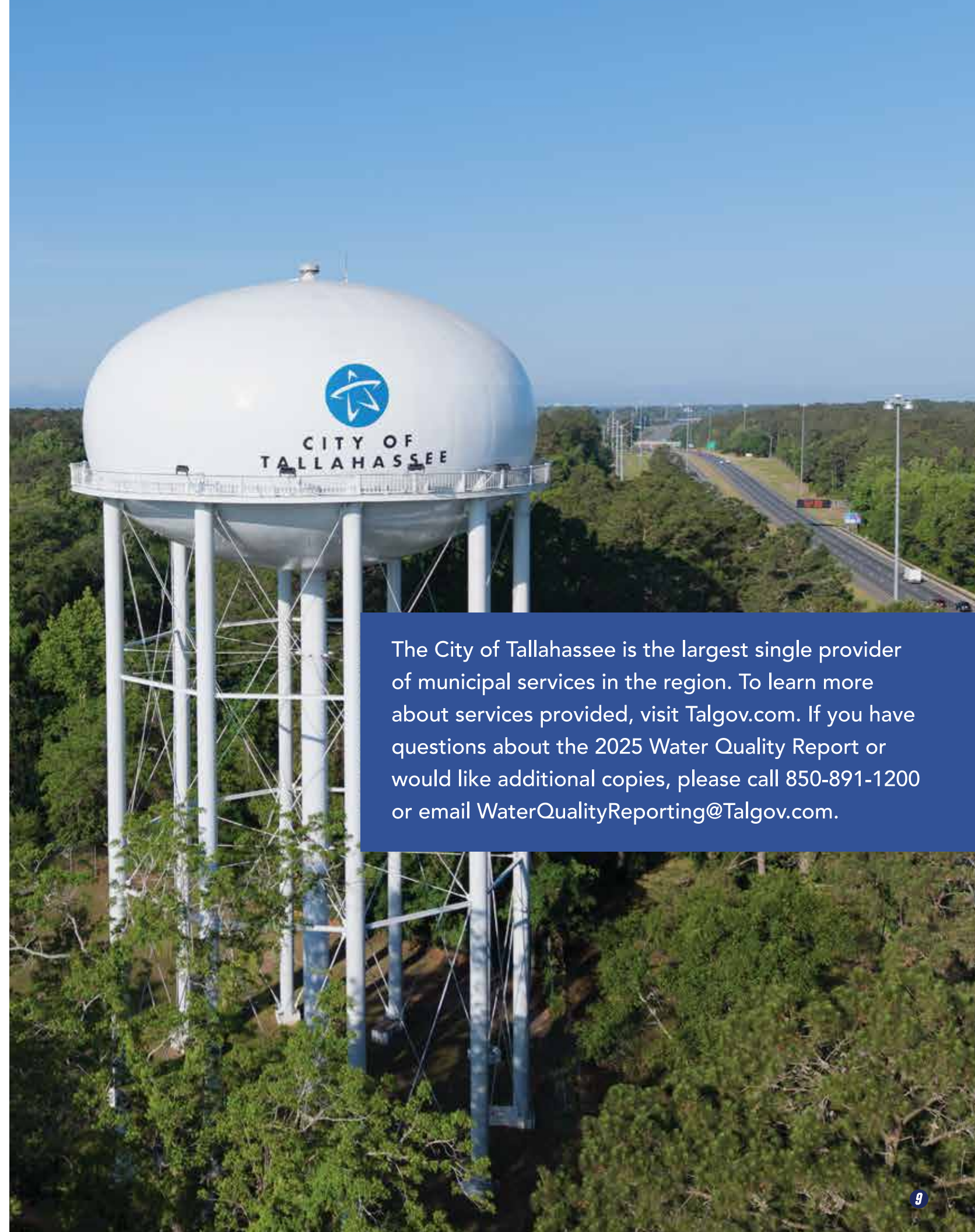
The City is far ahead of the curve when it comes to learning about “forever chemicals” also known as per- and polyfluoroalkyl substances, commonly referred to as PFAS, which have been widely used since the 1940s in the manufacturing of carpets, clothing, fabrics for furniture, paper packaging for food, non-stick cookware, and other materials, as well as in numerous industrial processes. We have taken an aggressive and broad approach by conducting sampling for PFAS in our water and wastewater systems prior to a regulatory requirement to do so.

Our proactive testing demonstrates that our drinking water is safe and the water coming out of our customers tap meets all regulatory standards.

Many companies have chosen to voluntarily halt the production and use of certain PFAS chemicals as new information about these chemicals emerged. Yet PFAS continues to present a significant and evolving environmental and public health challenge. These persistent, man-made chemicals are widespread in consumer products and the environment, resist natural degradation, and have been detected in water supplies, wastewater systems, and human populations worldwide. Despite decades of use, scientific understanding and regulatory frameworks governing PFAS remain incomplete and in transition.

City staff continues collaborating with national and state utility industry groups regarding PFAS. The best long-term approach is to prevent PFAS from entering the environment in the first place by phasing it out of manufacturing processes and consumer products. Until that is achieved, continued monitoring of our public drinking water system and the use of treatment when needed are critical to safeguarding drinking water quality.

To help residents learn more, we have created an online resource at Talgov.com/PFAS with the most current information available.



The City of Tallahassee is the largest single provider of municipal services in the region. To learn more about services provided, visit Talgov.com. If you have questions about the 2025 Water Quality Report or would like additional copies, please call 850-891-1200 or email WaterQualityReporting@Talgov.com.

TERMS AND ABBREVIATIONS

In the tables below, you may find unfamiliar terms and abbreviations. To help you better understand these terms, we've provided the following definitions:

Maximum Contaminant Level (MCL): The highest level of a contaminant that is allowed in drinking water. MCLs are set as close to the MCLGs as feasible using the best available treatment technology.

Maximum Contaminant Level Goal (MCLG): The level of a contaminant in drinking water below which there is no known; or expected risk to health. MCLGs allow for a margin of safety.

Action Level (AL): The concentration of a contaminant which, if exceeded, triggers treatment or other requirements that a water system must follow.

Locational Running Annual Average (LRAA): The average of sample analytical results for samples taken at a particular monitoring location during the previous four calendar quarters.

Maximum Residual Disinfectant Level (MRDL): The highest level of a disinfectant allowed in drinking water. There is convincing evidence that addition of a disinfectant is necessary for control of microbial contaminants.

Maximum Residual Disinfectant Level Goal (MRDLG): The level of a drinking water disinfectant below which there is no known or expected risk to health. MRDLGs do not reflect the benefits of the use of disinfectants to control microbial contaminants.

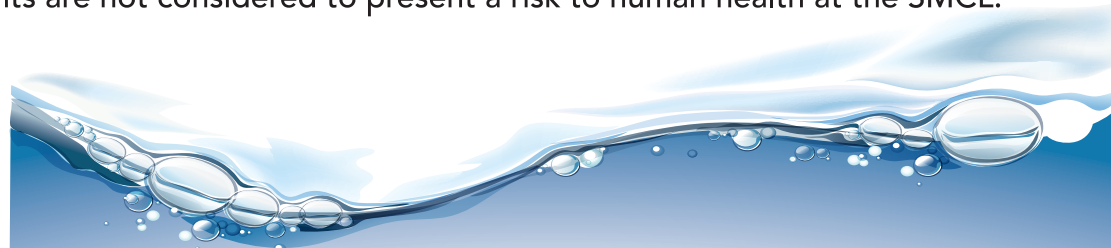
Not Detected (ND): Indicates that the substance was not found by laboratory analysis.

Parts per billion (ppb) or Micrograms per liter (µg/L): One part by weight of analyte to 1 billion parts by weight of the water sample.

Parts per million (ppm) or Milligrams per liter (mg/L): One part by weight of analyte to 1 million parts by weight of the water sample.

Picocurie per liter (pCi/L): Measure of the radioactivity in water.

Secondary Maximum Contaminant Level (SMCL): EPA established, non-mandatory water quality standards. These contaminants are not considered to present a risk to human health at the SMCL.



Some people may be more vulnerable to contaminants in drinking water than the general population. Immuno-compromised persons, such as persons with cancer undergoing chemotherapy, persons who have undergone organ transplants, people with HIV/AIDS or other immune system disorders, some elderly, and infants can be particularly at risk from infections. These people should seek advice about drinking water from their health care providers. EPA/Center for Disease Control (CDC) guidelines on appropriate means to lessen the risk of infection by Cryptosporidium and other microbiological contaminants are available from the Safe Drinking Water Hotline at 1-800-426-4791.

WATER QUALITY TEST RESULTS

Radioactive Contaminants

Contaminant and Unit of Measurement	Dates of sampling (mo/yr)	MCL Violation Y/N	Level Detected	Range of Results	MCLG	MCL	Likely Source of Contamination
Alpha emitters (pCi/L)	01/23 - 09/23	N	4.82	ND - 4.82	0	15	Erosion of natural deposits
Radium 226 + 228 or combined Radium (pCi/L)	01/23 - 09/23	N	0.58	ND - 0.58	0	5	Erosion of natural deposits
Uranium (µg/L)	01/20 - 09/20	N	0.5	NA	0	30	Erosion of natural deposits

Inorganic Contaminants

Contaminant and Unit of Measurement	Dates of sampling (mo/yr)	MCL Violation Y/N	Level Detected	Range of Results	MCLG	MCL	Likely Source of Contamination
Arsenic (ppb)	01/23 - 09/23	N	1.3	ND - 1.3	0	10	Erosion of natural deposits; runoff from orchards; runoff from glass and electronics production wastes
Barium (ppm)	01/23 - 09/23	N	0.025	0.0081 - 0.025	2	2	Discharge of drilling wastes; discharge from metal refineries; erosion of natural deposits
Chromium (ppb)	01/23 - 09/23	N	1.6	ND - 1.6	100	100	Discharge from steel and pulp mills; erosion of natural deposits
Cyanide (ppb)	01/23 - 09/23	N	5.2	ND - 5.2	200	200	Discharge from steel/metal factories; discharge from plastic and fertilizer factories
Fluoride (ppm)	01/23 - 09/23	N	0.85	0.34 - 0.85	4	4.0	Erosion of natural deposits; discharge from fertilizer and aluminum factories. Water additive which promotes strong teeth when at the optimum level of 0.7 ppm
Lead (point of entry) (ppb)	01/23 - 09/23	N	0.6	ND - 0.6	0	15	Residue from man-made pollution such as auto emissions and paint; lead pipe casing, and solder
Mercury (ppb)	01/23 - 09/23	N	0.1	ND - 0.1	2	2	Erosion of natural deposits; discharge from refineries and factories; runoff from landfills; runoff from cropland
Nitrate (as Nitrogen) (ppm)	01/25 - 12/25	N	0.68	ND - 0.68	10	10	Runoff from fertilizer use; leaching from septic tanks, sewage; erosion of natural deposits
Sodium (ppm)	01/23 - 12/23	N	4.21	2.46-4.21	N/A	160	Saltwater intrusion, leaching from soil

Volatile Organic Contaminants

Contaminant and Unit of Measurement	Dates of sampling (mo/yr)	MCL Violation Y/N	Level Detected (average)	Range of Results	MCLG	MCL	Likely Source of Contamination
Tetrachloroethylene (ppb)	01/25 - 11/25	N	1.65	ND - 1.88	0	3	Discharge from factories and dry cleaners

Stage 1 Disinfectants/Stage 2 Disinfection By-Products (D/DBP)

Disinfectant or Contaminant and Unit of Measurement	Dates of sampling (mo/yr)	MCL or MRDL Violation Y/N	Level Detected (LRAA)	Range of Results	MCLG or MRDLG	MCL or MRDL	Likely Source of Contamination
Chlorine (ppm)	01/25 - 12/25	N	0.81	0.75-0.87	MRDLG=4.0	MRDL=4.0	Water additive used to control microbes
Haloacetic Acids (HAA5) (ppb)	02/25 - 11/25	N	5.39	ND - 4.27	N/A	60	By-product of drinking water disinfection
Total Trihalomethanes (TTHM) (ppb)	02/25 - 11/25	N	13.3	ND - 16.5	N/A	80	By-product of drinking water disinfection

Lead and Copper (Tap Water) from Residential Sources

Contaminant and Unit of Measurement	Dates of sampling (mo/yr)	AL Exceeded (Y/N)	90th Percentile Result	No. of Sampling Sites Exceeding the AL	Range of Tap Sample Results	MCLG	AL (Action Level)	Likely Source of Contamination
Copper (tap water) (ppm)	07/23 - 09/23	N	0.52	0 out of 53	0.099 - 0.68	1.3	1.3	Corrosion of household plumbing systems; erosion of natural deposits; leaching from wood preservatives
Lead (tap water) (ppb)	07/23 - 09/23	N	1.4	1 out of 53	ND - 19.8	0	15	Corrosion of household plumbing systems; erosion of natural deposits

It may be necessary to make improvements to your water system that will benefit all our customers. The costs of these improvements may be reflected in the rates. Rate adjustments may be necessary to address these improvements.



"Our state-of-the-art Water Quality Laboratory reflects the City's commitment to innovation, environmental stewardship and excellence in public service. Behind every analysis of our community's water supply is a dedicated team of skilled professionals whose diverse expertise and shared passion ensure we continue providing one of life's most essential resources with pride and care."

- Vivian Sorial, Water Quality Administrator & Technical Manager





City of Tallahassee
Your Own UtilitiesSM

City of Tallahassee Water Utility
4505 Springhill Rd. BLDG A
Tallahassee, FL 32305

PRSRT STD
U.S. POSTAGE
PAID
Tallahassee, FL
Permit No. 1