

# For More Information

For more information or to nominate a new road for canopy roads designation, please contact the Tallahassee-Leon County Planning Department at (850) 891-6400 or email [planning@talgov.com](mailto:planning@talgov.com).

## View the Canopy Roads Management Plan at

[www.talgov.com/planning](http://www.talgov.com/planning)

## Visit the Canopy Roads Experience website at

[www.tlcfgis.org/history](http://www.tlcfgis.org/history)  
for maps and a self-guided tour!

## For Permitting:

Leon County Development Services (850) 606-1300

Tallahassee Growth Management (850) 891-7001

The Canopy Roads Citizens Committee meets on the third Wednesday of every other month starting in January at 5:30 PM in the Frenchtown Renaissance Center 2nd floor conference room. You can get information about the committee and meeting dates at [www.leoncountyfl.gov/committees](http://www.leoncountyfl.gov/committees).



**PLANNING**   
DEPARTMENT

a division of PLACE

Tallahassee-Leon County Planning Department

Frenchtown Renaissance Center  
435 N. Macomb Street | Tallahassee FL, 32301

# TALLAHASSEE & LEON COUNTY CANOPY ROADS



Owning a part of a  
community treasure:  
Information for landowners  
along Canopy Roads





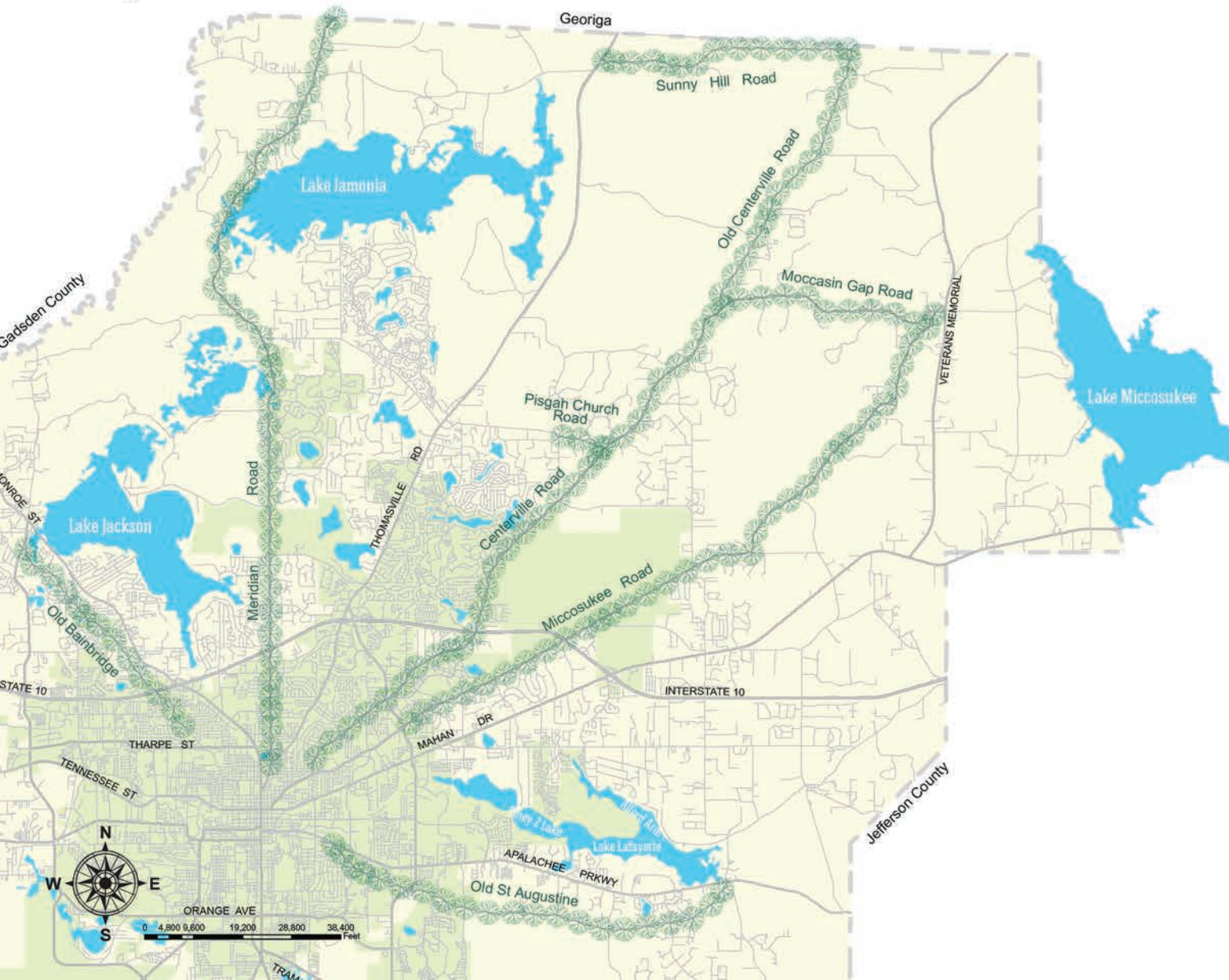


**Our canopy roads** are a community treasure with history reaching back hundreds of years, originating as Native American trails later used by Spanish explorers and early American settlers. It has taken centuries for travelers to cut ravines as much as twelve feet deep forming the red clay embankments. These paths became the first roads in the area and are recognized as a unique cultural and natural resource and the signature of our community. More than just a mechanism for travel, the Canopy Roads are an experience that recognizes the beauty, history, and culture of Tallahassee and Leon County and attracts visitors from near and far who come to enjoy their beauty and grandeur.



# Designated Canopy Roads (April 2009)

- Meridian Road from Seventh Avenue to the state line.
- Centerville Road-Moccasin Gap Road from Seventh Avenue to State Road 59.
- Miccosukee Road from Capital Circle to Moccasin Gap Road.
- Old St. Augustine Road from East Lafayette Street to W. W. Kelley Road.
- Old Bainbridge Road from Raa Avenue to Capital Circle.
- Sunny Hill Road from Thomasville Road to Old Centerville Road.
- Old Centerville Road from Centerville Road to the state line.
- Pisgah Church Road from Bradfordville Road to the end of the County maintained right of way near Pisgah Methodist Church.



# Canopy Roads Protections and Regulation

The Tallahassee-Leon County Comprehensive Plan seeks to balance the management of growth with environmental protection but gives precedence to environmental protection. Our canopy road system falls under this umbrella of environmental protection and needs continuous management for its preservation. In order to help protect these roads and the trees that make them so special, the City and County established a canopy road overlay district that includes all lands within 100 feet of the centerline of each canopy road. This area (commonly known as the canopy road protection zone or CRPZ) offers long-term protection to the canopy and surrounding plants by regulating impact.

Activities requiring City or County review and permitting include:

- Removal of vegetation, including trees and understory plants, unless authorized for health, safety, or welfare of the public
- Driveway connections are limited and sharing of driveways is encouraged.
- The placement of any structure is prohibited in the CRPZ, which includes buildings, fences, and signs. Gates may be permitted over existing driveways.

These restrictions not only protect the tree canopy and scenic view but also enhance the safety of canopy roads. By limiting the number of driveway connections and prohibiting structures in the canopy road protection zone, drivers have fewer distractions and can focus on enjoying the full canopy road experience.

Property owners who wish to impact the CRPZ should contact the City or County early in the planning process. Any proposed activity in the CRPZ will be reviewed by either City of Tallahassee Growth Management or Leon County Development Services and Environmental Management. Review by the Canopy Roads Citizens Committee is also required.

This committee is an eight-member public advisory group made up of citizens who live in Tallahassee or Leon County that works to preserve and protect the Canopy Roads experience by providing recommendations about proposed development and other activities along canopy roads in Leon County and the City of Tallahassee.

## Canopy Road Enhancement

The Canopy Roads Management Plan, updated in 2019 and available at [www.talgov.com/planning](http://www.talgov.com/planning), guides the management and enhancement of canopy roads. Currently, both the City and the County work to enhance canopy roads by removing dead or hazardous trees, pruning, controlling invasive species, and planting appropriate native trees and shrubs. This work only takes place in the public right of way, typically 10-12' from the edge of the road. The rest of the CRPZ is on private property, and enhancement of this area is encouraged with authorization.

Allowable Activities:

- After issuance of a permit, trees may be removed if they are known invasive species. Invasive trees have become a real threat to our native trees and if given the opportunity can eventually crowd out the native species. Refer to Leon County's List of Invasive Exotic Plants for plant species that are allowed to be removed. All other trees inside the CRPZ are protected. Call City or County staff first to verify the species.
- After issuance of a permit, repair or maintenance of existing structures or fences is allowed provided the material is the same or less visually intrusive and the repair does not impact existing trees or increase the encroachment into the CRPZ.
- Improvement of the plant community in the CRPZ on your property is encouraged! A vegetation management plan is required to be submitted. City or County staff can assist you with determining what improvements would be appropriate.

## What you can do to help

The most important player in the success of these programs is you, the landowner. You can help maintain the canopy road experience for future generations through these actions:

- Follow the regulations pertaining to canopy road protection.
- Contact City or County staff early in project development to determine if a permit is needed. Early participation is key to the development of a successful project.
- Talk with neighbors about management and protection of the tree canopy on your properties.
- Contact City or County staff about resources for re-vegetating your portion of the canopy road, if needed.
- Inform City or County staff if you see violations of canopy road requirements.
- Participate in canopy road public education and outreach activities.
- Utilize the City or County Adopt a Tree program to plant trees.