



The City of Tallahassee and The Tallahassee Fire Department Present:



# The Newsladder

**Inside this issue:**

What Does the Fire Department Do?	1
TFD Organizational Chart	2
Allergy Season	3
Burning Yard Trash	3
Employee Spotlight	4
Weather Watches/Warning	4

## What Does the Fire Department Do?

By Division Chief Andrea Jones

Often we will respond to a citizen's call for medical help only to be told when we get there, "We didn't call for the Fire Department, where's the ambulance?" Well we do more than just fires. Have you ever wondered what your Fire Department does, or how it operates?

### Fire Prevention

They say, "An ounce of prevention is worth a pound of cure." This is very true in the fire service. From schools to nursing homes, the Fire Prevention Division helps people learn how to be fire safe and how to take action should a fire occur. They also help the community be fire safe by inspecting new commercial buildings for proper sprinkler systems, exits, hydrants and even access for the fire trucks. The end result of learning to be fire safe has been good. Fires are declining in our nation and in Tallahassee. Even with our successes, fires do occur and when they do, it is this division that investigates how the fire started. They work hand-in-hand with local and state law enforcement agencies to determine the causes of fire, identify arsonists and fire occurrence patterns in

the community, the state and the country. The Tallahassee Fire Prevention Division helps save more than money. They help save lives.

### Emergency Medical Service (EMS)

The Tallahassee Fire Department firefighters are trained in Basic Life Support (BLS), and Advanced Life Support (ALS). Respectively, we call them Emergency Medical Technicians and Paramedics. The EMS Division is responsible for the training of firefighters and acquisition of the equipment on the trucks that allow us to perform procedures that can reduce the recovery time of a patient and/or save a life.

### Logistics

For every firefighter there is equipment, uniforms, protective gear, trucks... the list goes on and on. From repairing the sinks to purchasing specialized firefighting equipment, the Logistics Division ensures that we have the best equipment so that we can perform our best.

### Training

The Training Division focuses on making sure that our skills are up to snuff. From those skills that we don't use a lot, but are very dangerous, to staying "ahead of the curve" with new practices, the Training Division is responsible for making sure that we are ready to perform. Every week we are training with live fire, or cutting up cars to practice with the "jaws of life." Very often you can see us rappelling on ropes, cutting up concrete to "save" a trapped mannequin or attending a state certified class that trains new firefighters.

### Operations

The Operations Division is where all of this comes together. The firefighters have been training, they have their equipment, the certifications are current - now what? The Ops Division is responsible for the scheduling of vacations, for ensuring we have the right amount of firefighters to perform as teams, for conducting pre-incident plans (plans that help us with decisions on particular buildings should an emergency occur)

*(Continued on page 2)*

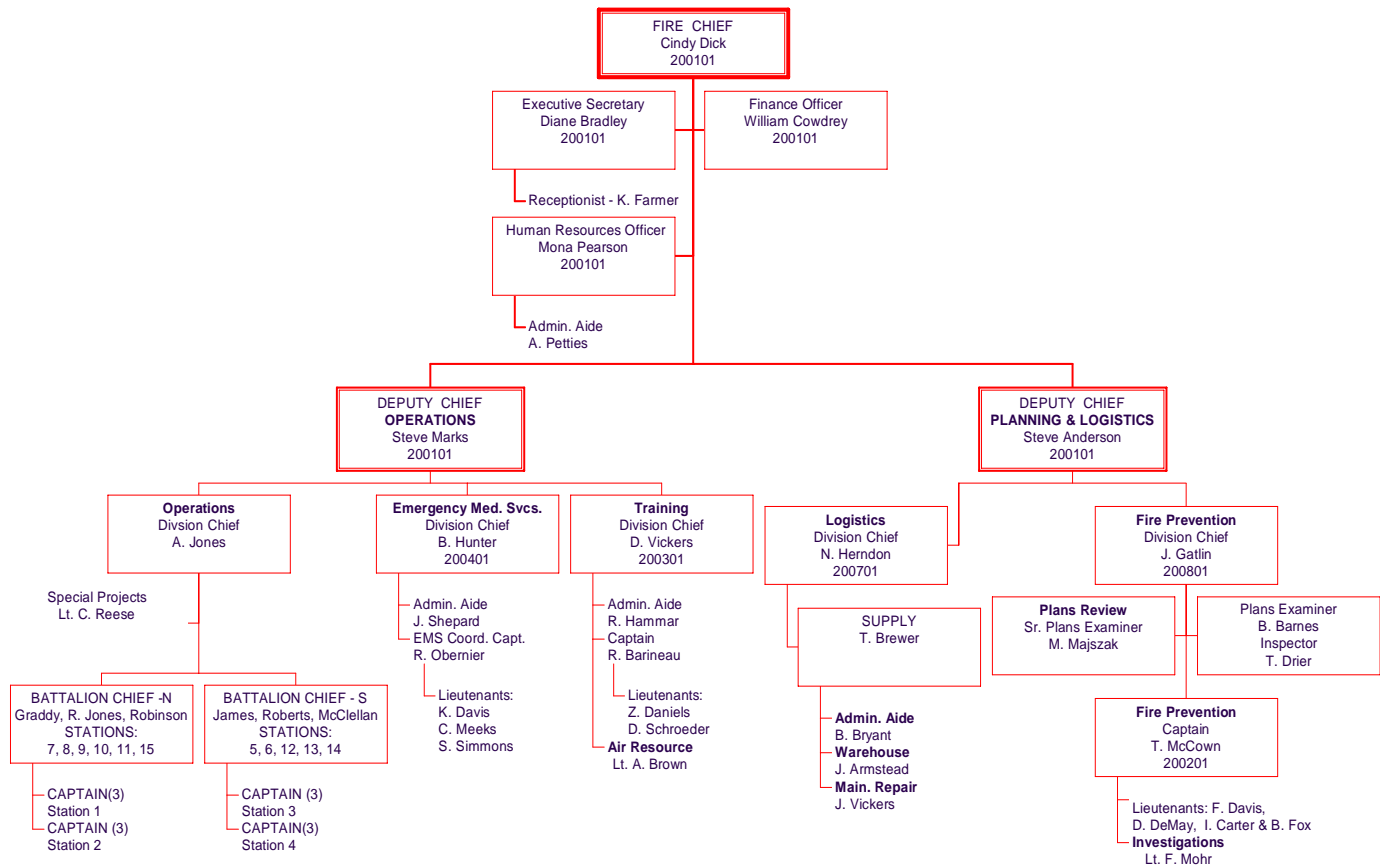
## What Does the Fire Department Do?

(Continued from page 1)



and in general, making sure all of these components come together effectively.

So, in a nutshell, that's what we do. We hope that you are never sick, trapped in a collapsed building, buried underground in a trench, involved in a severe automobile accident or in a fire. If you do find yourself in one of these situations, rest assured we will be there and we will bring the best equipment and trained personnel to you.



## It is that Time of Year Again: Allergy Season

### What's the Problem?

Allergies are the 6th leading cause of chronic illness in the U.S. with an annual cost in excess of \$18 billion. More than 50 million Americans suffer from allergies each year. Allergies are an overreaction of the immune system to substances that generally do not affect other individuals. These substances, or allergens, can cause sneezing, coughing, and itching. Allergic reactions range from merely bothersome to life-threatening. Some allergies are seasonal, like hay fever.

### Who's at Risk?

Anyone may have or develop an allergy - from a baby born with an allergy to cow's milk, to a child who gets poison ivy, to a senior citizen who develops hives after taking a new medication.

### Can It Be Prevented?

Allergies can generally not be prevented but allergic reactions can be. Once a person knows they are allergic to a certain substance, they can avoid contact with the allergen. Strategies for doing this include being in an air-conditioned environment during peak hay-fever season, avoiding certain foods, and eliminating dust mites and animal dander from the home. They can also control the allergy by reducing or eliminating the symptoms. Strategies include taking medication to counteract reactions or minimize symptoms and being immunized with allergy injection therapy.

### The Bottom Line

The most common allergic diseases include: hay fever, asthma, conjunctivitis, hives, eczema, dermatitis and sinusi-

tis.

- Food allergies are most prevalent in young children and are frequently outgrown.
- Latex allergies are a reaction to the proteins in latex rubber, a substance used in gloves, condoms and other products.
- Bees, hornets, wasps, yellow jackets, and fire ants can cause insect sting allergies.
- Allergies to drugs, like penicillin, can affect any tissue or organ in the body.

Anaphylaxis is the most severe allergic reaction. Symptoms include flush; tingling of the palms of the hands, soles of the feet or lips; lightheadedness, and chest-tightness. If not treated, these can progress into seizures, cardiac arrhythmia, shock, and respiratory distress.

Anaphylaxis can result in death. Food, latex, insect sting, and drug allergies can all result in anaphylaxis.

<http://www.cdc.gov>



## Big Pile of Leaves? What you Should Know about Burning Yard Trash

### In the City

A burn permit is required before burning any leaves, limbs or yard clippings. You must meet the state requirements for burning before you are issued a permit. These requirements are as follows:

- You must be at least 50 feet from your house, and
- You must be at least 100 feet from a road or street, and
- You must be at least 300 feet from a neighbor's

house, and

- You must burn in a barrel or pit with a screen over it.
- Burning is not permitted on rainy, foggy or windy days.
- Only natural vegetation can be burned. No processed wood, rubber, wiring, pvc piping, or shingles.

If you meet these requirements and live within the city limits call 891-6629 or contact the Bureau of Fire Prevention to set up an appointment with an inspector.

### In the County

Homeowners living in single or duplex homes are allowed to burn yard waste (grass clippings, brush, leaves, tree limbs, palm fronds, etc.) on the premises in a non-combustible container between the hours of 9:00 a.m. Eastern Time (8:00 Central Time) and one hour before sunset without any specific authorization from the Division of Forestry. Yard waste fires must be situated at least



50 feet from any paved roadway, at least 25 feet from any wooded area, at least 25 feet from the burner's house and at least 150 feet from other occupied buildings. For more information contact the Division of Forestry, 922-5155.

## TFD Employee Spotlight

**On March 24, the Department added eight new firefighters to its family. They are: Left to right, top to bottom**

Chad Persing  
Jarrod Duggar  
Jeremiah Creech  
Thelmon Washington  
Thomas Wright  
Jonathan Davis  
Robert Clary  
Brittany Butler



## What you Should Know about Weather Watches/Warnings

### Stay Tuned for Storm Watches and Warnings

When there are thunderstorms in your area, turn on your radio or TV to get the latest emergency information from local authorities. Listen for announcements of a tornado watch or tornado warning.

### Local Warning System

Learn about the tornado warning system of your county or locality. Most tornado-prone areas have a siren system. Know how to distinguish between the siren's warnings for a tornado *watch* and a tornado *warning*. A **tornado watch** is issued when weather conditions favor the formation of tornadoes, for example, during a severe thunderstorm. During a **tornado watch**, stay tuned to local radio and TV stations or a National Oceanographic and Atmospheric Administration (NOAA) Weather Radio for further weather information. Watch the weather and be prepared to take shelter immediately if conditions worsen. A **tornado warning** is issued when a tornado funnel is sighted or indicated by weather radar. *You should take shelter immediately.*

### Thunderstorms

Because tornadoes often accompany thunderstorms, pay close attention to changing weather conditions when there is a severe thunderstorm watch or warning. A **severe thunderstorm watch** means severe thunderstorms are possible in your area. A **severe thunderstorm warning** means severe thunderstorms are occurring in your area. Keep fresh batteries and a battery-powered radio or TV on hand. Electrical power is often interrupted during thunderstorms--just when information about weather warnings is most needed.

### Important Measures To Take

- Take a few minutes with your family to develop a tornado emergency plan. Sketch a floor plan of where you live, or walk through each room and discuss where and how to seek shelter.
- Show a second way to exit from each room or area. If you need special equipment, such as a rope ladder, mark where it is located.
- Mark where your first-aid kit and fire extinguishers are located.
- Mark where the utility switches or valves are located so they can be turned off--if time permits--in an emergency.
- Teach your family how to administer basic first aid, how to use a fire extinguisher, and how and when to turn off water, gas, and electricity in your home.
- Learn the emergency dismissal policy for your child's school.
- Make sure your children know--
  - What a tornado is
  - What tornado watches and warnings are
  - What county they live in (warnings are issued by county)
  - How to take shelter, whether at home or at school.

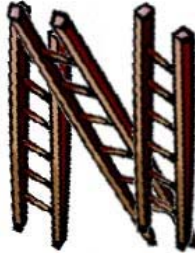
<http://emergency.cdc.gov>



THE CITY OF TALLAHASSEE AND  
THE TALLAHASSEE FIRE DEPARTMENT PRESENT:

The Newsladder  
Tallahassee Fire Department  
327 North Adams Street  
Tallahassee, FL 32301

---



The Newsladder is a publication of the  
Tallahassee Fire Department  
Intended For  
The Citizens of Tallahassee

Cindy Dick, Fire Chief  
Mona Pearson, Editor and Contributing Writer  
Email: [Mona.Pearson@talgov.com](mailto:Mona.Pearson@talgov.com)  
Phone: 850-891-6600  
Fax: 850-891-6606

---

WE'RE ON THE WEB!  
[WWW.TALGOV.COM](http://WWW.TALGOV.COM)

---